



ABURIYA TAKEAWAY MENU

Japanese Wagyu Yakiniku

炭火焼肉 あぶりや



**WAGYU
EXPRESS**
BY ABURIYA

ABURIYA@ROBERTSON QUAY : 6735-4862
60 Robertson Quay, #01-03 The Quayside S238252

ABURIYA@BOAT QUAY : 6532-0365
78 79 BOAT QUAY S049866/7

WAGYU EXPRESS by ABURIYA : 6226-0854
108 Tanjong Pagar Road, S088526

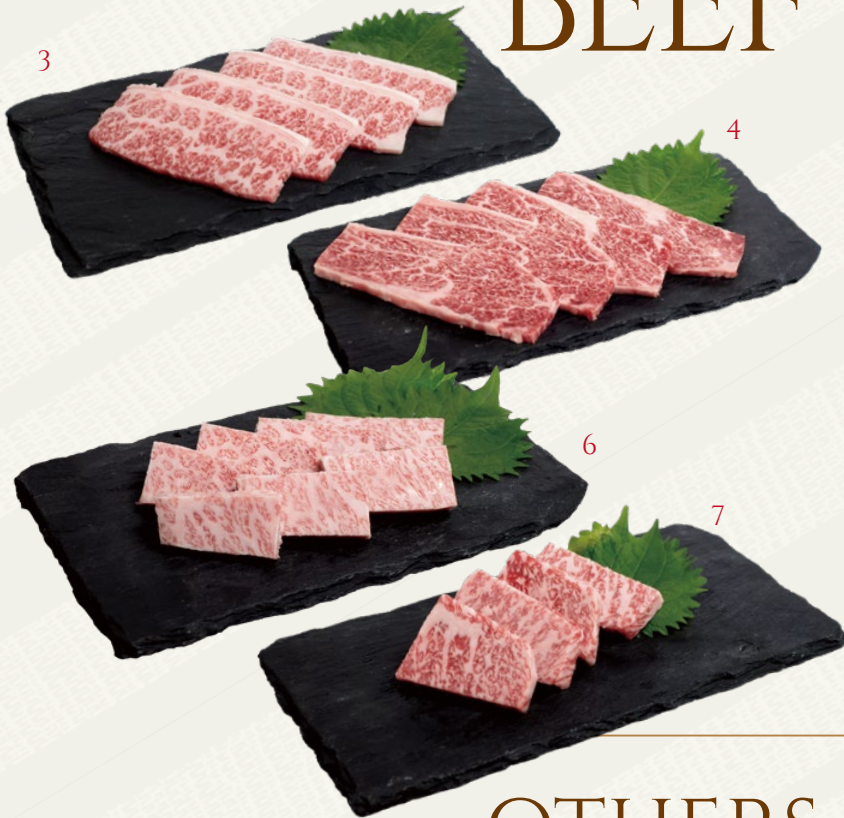


和牛 Wagyu



Each meat order comes with rice and side dishes
Meat will be freshly cooked upon order

BEEF

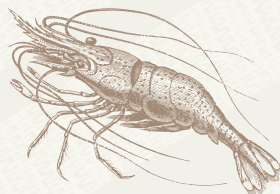


- | | | |
|---|---|------|
| 1 | TOKACHI KARUBI
TOKACHI SHORT RIB | \$16 |
| 2 | WAGYU KARUBI
WAGYU SHORT RIB | \$17 |
| 3 | WAGYU JO KARUBI
WAGYU PRIME SHORT RIB | \$19 |
| 4 | WAGYU JO ROSU
WAGYU PRIME LOIN | \$26 |
| 5 | WAGYU AKAMI
WAGYU LEAN BEEF | \$17 |
| 6 | TOKUSEN WAGYU KARUBI
PREMIUM WAGYU SHORT RIB | \$29 |
| 7 | TOKUSEN WAGYU SIRLOIN
PREMIUM WAGYU SIRLOIN | \$37 |

OTHERS



4

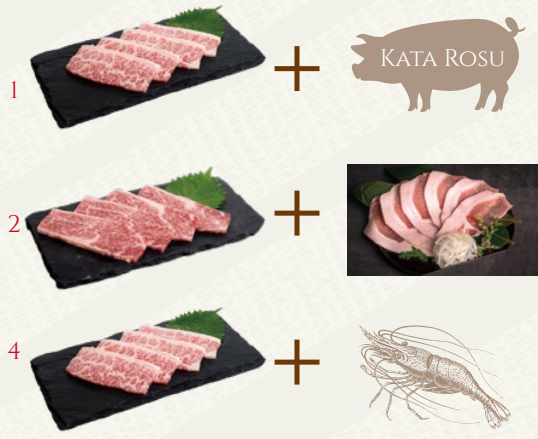


- | | | |
|---|------------------------------|------|
| 1 | BUTA KARUBI
PORK BELLY | \$14 |
| 2 | BUTA KATA ROSU
PORK LOIN | \$14 |
| 3 | TONTORO
PORK CHEEK | \$14 |
| 4 | BUTA SIRLOIN
PORK SIRLOIN | \$16 |
| 5 | LAMB | \$12 |
| 6 | EBI
TIGER PRAWNS | \$18 |

COMBO

ABURIYA TAKEAWAY MENU

Japanese Wagyu Yakiniku 炭火焼肉 あぶりや



- 1 WAGYU JO KARUBI + BUTA KATA ROSU \$16
- 2 WAGYU JO ROSU + BUTA SIRLOIN \$17
- 3 BUTA KATA ROSU + TONTORO \$19
- 4 WAGYU JO KARUBI + EBI \$26
- 5 BUTA KATA ROSU + EBI \$17

SALAD



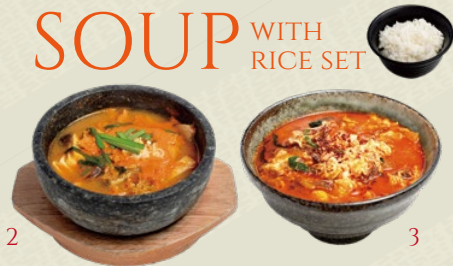
- 1 ABURIYA SALAD
ROMAINE LETTUCE & JAPANESE LEEK TOSSED WITH A FRIED PEANUT DRESSING \$8
- 2 HORENSEO SALAD
SPINACH SALAD WITH LEMON AND GARLIC OIL DRESSING (CONTAINS BACON) \$8
- 3 MIZUNA SALAD
JAPANESE ROQUETTE & ONION WITH SESAME, GARLIC AND YUZU DRESSING \$8
- 4 POTATO SALAD
JAPANESE-STYLE POTATO SALAD WITH BACON & ONIONS \$8

RICE . NOODLES



- 1 BIBINBA
VEGETABLES, MINCED BEEF AND RICE WITH SPICY SAUCE (WITH SIDE DISHES) \$14
- 2 GARLIC CHAHAN
FRIED RICE WITH GARLIC AND BEEF (WITH SIDE DISHES) \$14
- 3 RICE SET
RICE WITH 2 SMALL SERVINGS OF SIDES \$3
- 4 REIMEN
KOREAN NOODLES WITH KIMCHI & CHAR SIEW IN COLD, TANGY SOUP \$12
- 5 BIBINMEN
SPICY, DRY-TOSSED NOODLES WITH KIMCHI & CHAR SIEW (CHILLED) \$12

SOUP WITH RICE SET



- 1 TOFU CHIGE
SPICY MISO-BASED SOUP WITH VEGETABLES AND TOFU \$14
- 2 BUTA KIMCHI CHIGE
SPICY MISO-BASED SOUP WITH KIMCHI, PORK AND TOFU \$15
- 3 TEGUTAN SOUP
SPICY SOUP WITH SHREDDED BEEF AND VEGETABLES \$12

SIDES



- 1 KIMCHI MORI
ASSORTED KIMCHI \$10
- 2 HAKUSAI KIMCHI
CHINESE CABBAGE KIMCHI \$7
- 3 NAMURU MORI
ASSORTED NAMURU VEGETABLES \$10